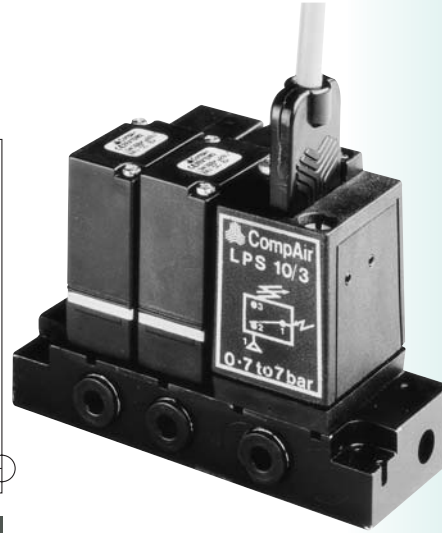
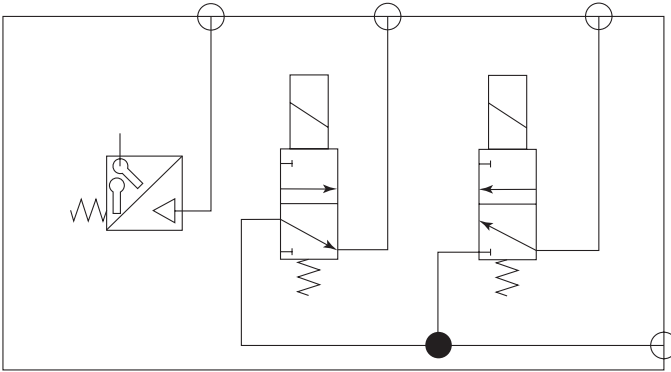


Control Options & Accessories

P.L.C. Interface Manifold – Part No. K065J47620
Allows for the conversion of electrical signals to pneumatic commands and vice versa.



Technical Data

PRESSURE SWITCH

Adj. firing pressure	0.7 - 7 bar (10-100 psi)
Max. Pressure	8 Bar (116 psi)
Differential pressure	Less than 25% max.
Electrical connection	2 mtr. long; tamper proof; 3 amp rating.

Contacts:

1.	2.	3.
Common	N.C.	N.O.
Red	White	Black
24 volt D.C. 2 watt coils		

Push-in fittings to accept 4mm tubing.

Dimensions

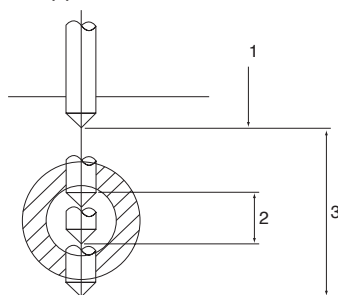
Overall Length:	80 mm (3.15")
Width:	38 mm (1.50")
Height:	64 mm (2.52")

Skip Control Unit (S.C.U.)

The unit can be provided with a skip feature in 13mm, 25mm, 50mm and 75mm stroke models. The skip function is usually furnished in either of two styles as follows:

a. (C.F. + F.F. + C.F.):
 Controlled feed followed by a fast feed and then a return to a controlled feed for the balance of the S.C.U. stroke. This style is usually utilised for drilling tubing, clevis joints or any application requiring 2 holes in line with a space between the holes.

b. Controlled feed followed by a fast feed for the balance of the S.C.U. stroke. This style has been used for combined drilling and tapping or for special applications.



IMPORTANT

Need to specify:

1. First controlled feed
2. Fast feed
3. Total stroke
4. Thrust
5. If round tube - inside and outside diameters
6. If not round tube - cross sectional dimensions
7. Drill diameter and point angle
8. Controlled feed rate

Consult factory for price and delivery information