

Front End Attachments

1. Drill Chucks

Drills come as standard with 10mm chuck for all models other the 17000 rpm version, which is supplied with a 6.5mm chuck. Refer to table for other options.

Technical Data

Chuck Capacity		Type	Part Number
mm	in		
2 - 13 mm	5/64" - 1/2"	Keyed	A6415/21
0 - 6.5 mm	0 - 1/4"	Keyed	A6415/16
2 - 13 mm	5/64" - 1/2"	Keyless	A6415/29
1.5 - 10 mm	1/16" - 3/8"	Keyless	A6415/28

Note: 13mm chucks fit only on units with speeds up to 1500 rpm

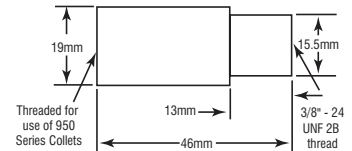
2. Collet Holder and Collets

Part no. of Collet Holder
PT8558/36

Used to give collet gripping capacity to the single spindle drill. The holder threads onto the 3/8"-24 UNF output shaft of the drill. Collets then screw into the opposite end, in order to grip the drill bit.



Dimensions

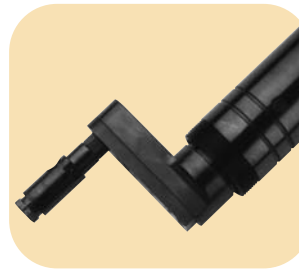


Uses only the 950 series collets— see chart opposite

3. Offset Heads

Application

Ideally suited for off center drilling and obstructed hole access. Offset heads can also be used to drill holes with extremely close center line distances.



SF5225 - shown fitted with collet holder

SF5450 - shown fitted with chuck

Note: Heads are not supplied with either collet holders or chucks. If required please select output options from above.

Technical Data

Part no.	SF5225	SF5450
Offset L (mm)	58	114
Max. Speed (rpm)	5000	5000
Max. Torque (Nm)	69	69

1mm = 0.03937 inches
1 Nm = 0.7375 lbf-ft

Dimensions

